

ROCKETFARM

#brainpower, technology and robotics for your industry



WHO WE ARE

ROCKETFARM



Brainpower, technology and
robotics for your industry

- SW and robotics company
- Robots
- Robotic and non-robotic SW as consultants
- UR+ Certified
- Electric Friends Camera robot
- nLink Drilling robot
- Robots since 2012



ELECTRIC FRIENDS

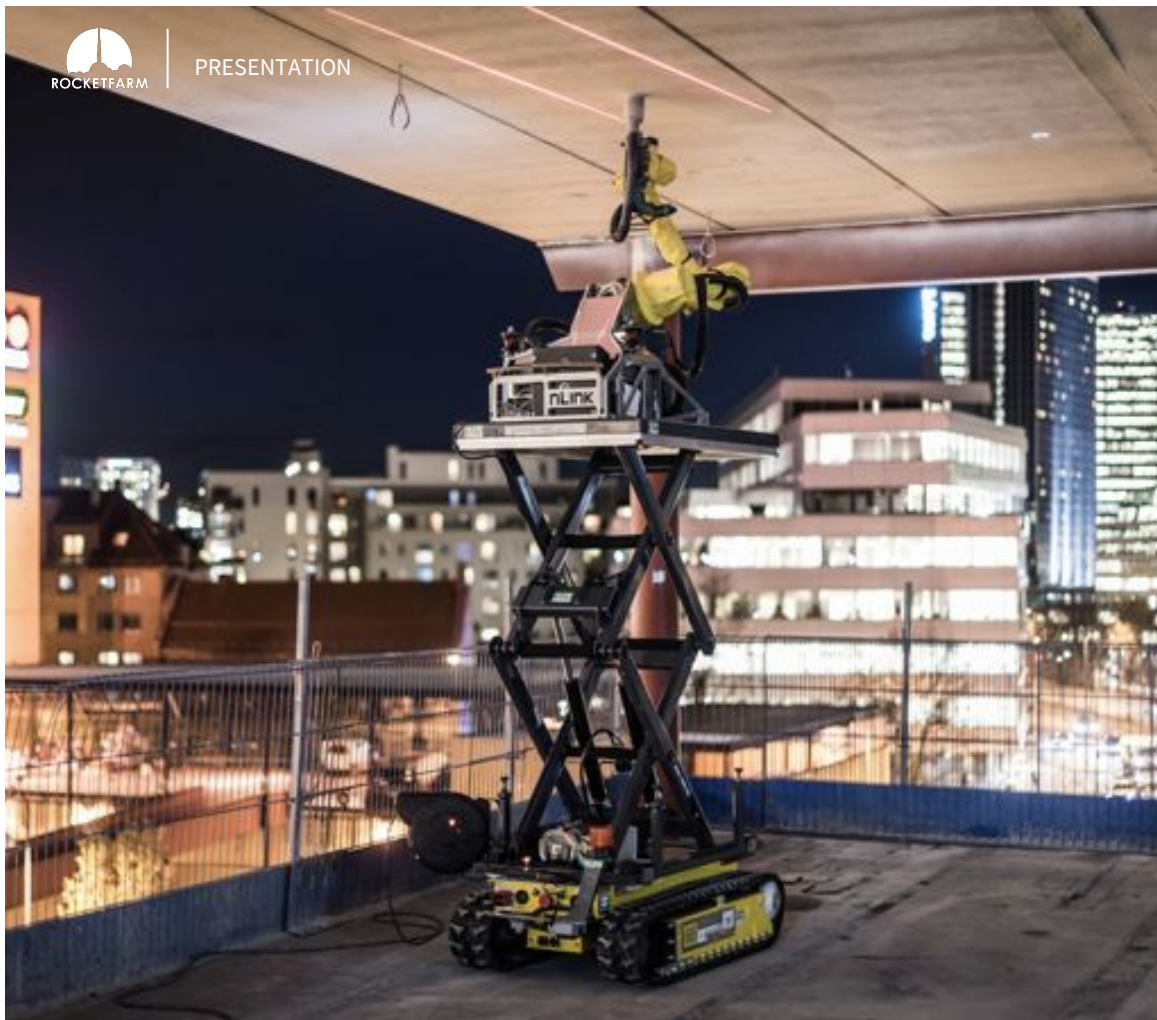
Rocketfarm did all the math, in the development of TV-studio camera robots for Electric Friends.





PRESENTATION

www.rocketfarm.no



nLink -drilling robots

nLink is developing mobile robots, in cooperation with Hilti.

Rocketfarm is a key technology partner.



PALLY

Palletizing software for UR Robotics



WHAT IS PALLY?



Pally palletizing software

Ideal for small factories that run batches with different products all in a reduced space with small payloads

Allows changing boxes and pallets in one or two production lines

Easy to use

Flexible to changes in production

Fast installation



Looking for integrators of ROCKETFARM UR-Software

Target: deliver software which allows fast installation of robots.

Experience: RF installed and delivered robots in Norway and Canada. Kameleon delivered and installed 5 robots during summer. Last robot 1 robot in 1 day despite multiple non-ideal situations on site.

Key Selling points:



Integrator:

- Fast installation
- Well proven technology, used by Mattel in QC, Canada and multiple factories in Norway (<https://www.universal-robots.com/case-stories/nortura/>)
- User defines patterns themselves, integrator may be released from this task
- Based on UR
- HW kit can be delivered
- Can operate two lines and two pallets in multiple combinations
- Compatible with multiple grippers, just define your own
- With or without vision
- No programming skills required



End user:

- Fast installation, no need to stop production
- Access to the pallet configurator: palletizer.rocketfarm.no
- Can create an infinite amount of patterns themselves
- Free to use, customer does not have to contact integrator for minor changes
- Save time planning and loading patterns



Benefits over UR standard software



Pally features:

- Define and save boxes dimensions, weight and label/barcode position
- Specify boxes position, orientation and padding for any given layer/pattern
- Save and re-use patterns
- Choose the pallet and pick up position
- Select / edit the pattern applied to a given layer
- Simultaneously stack two different pallets, including features such as prioritize one over another
- Maximum installation time: 1 day
- Teach three points per pallet and one point per pickup position, the program will guide you through this configuration

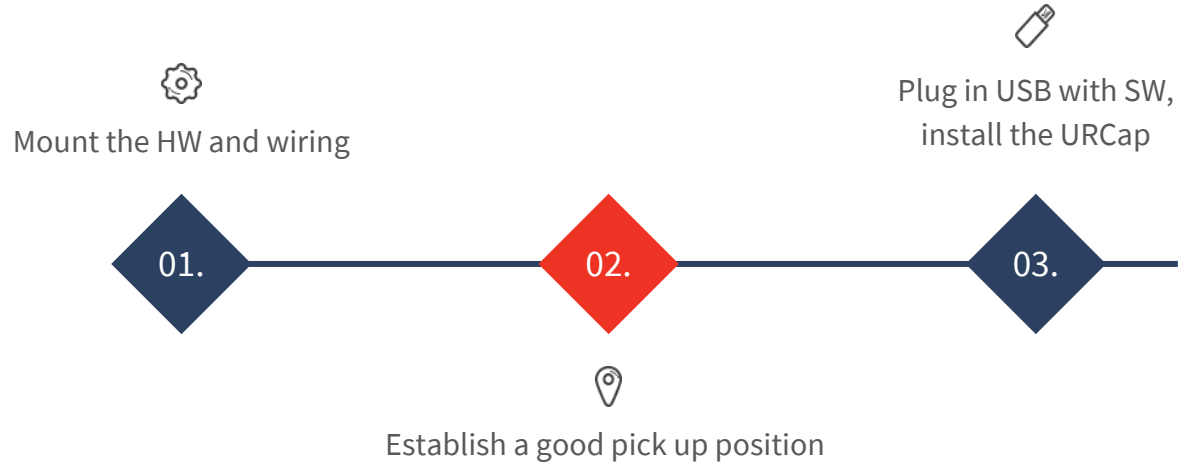


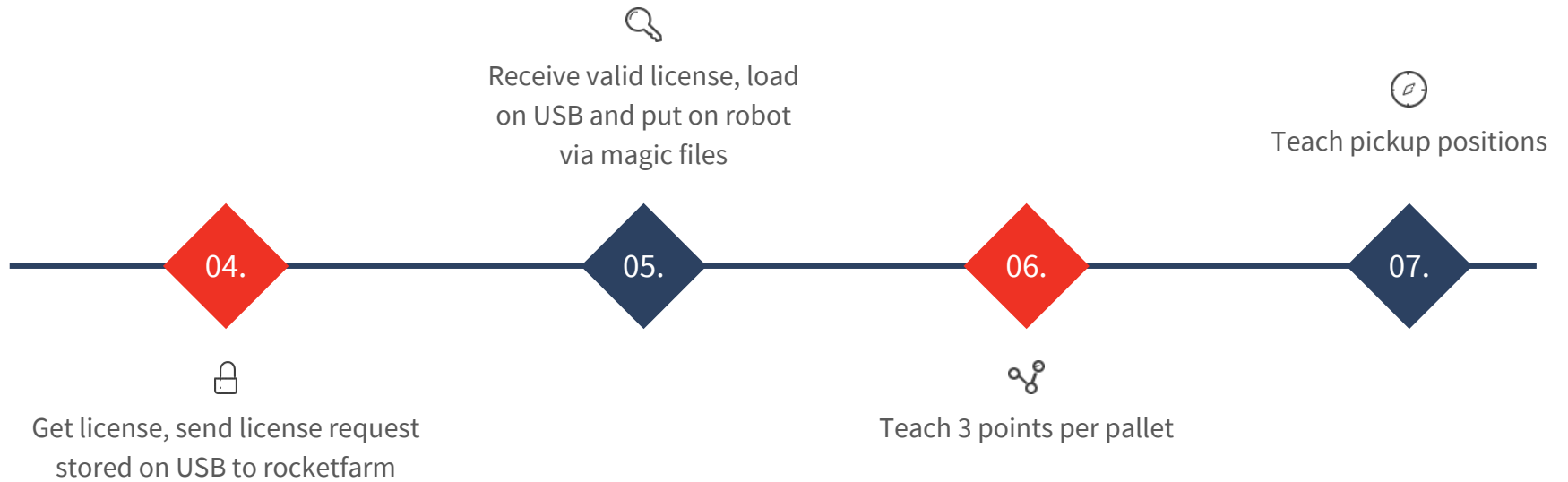
User interface:

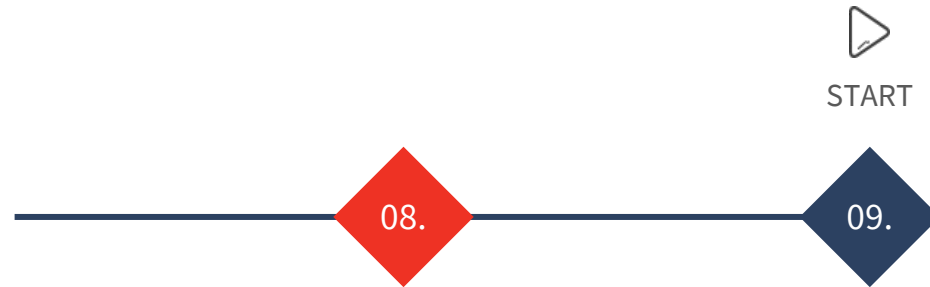
- Intuitive drag and drop graphical interface
- No coding skills required
- Define patterns interacting directly with pre-defined boxes
- No need to work out the pattern, just distribute boxes in a given layer and save it, then stack pre-defined layers in the pallet, Pally works out the path plan for you
- Simulation interface available
- Select the name of the product and press play, the rest follows the standard UR convention



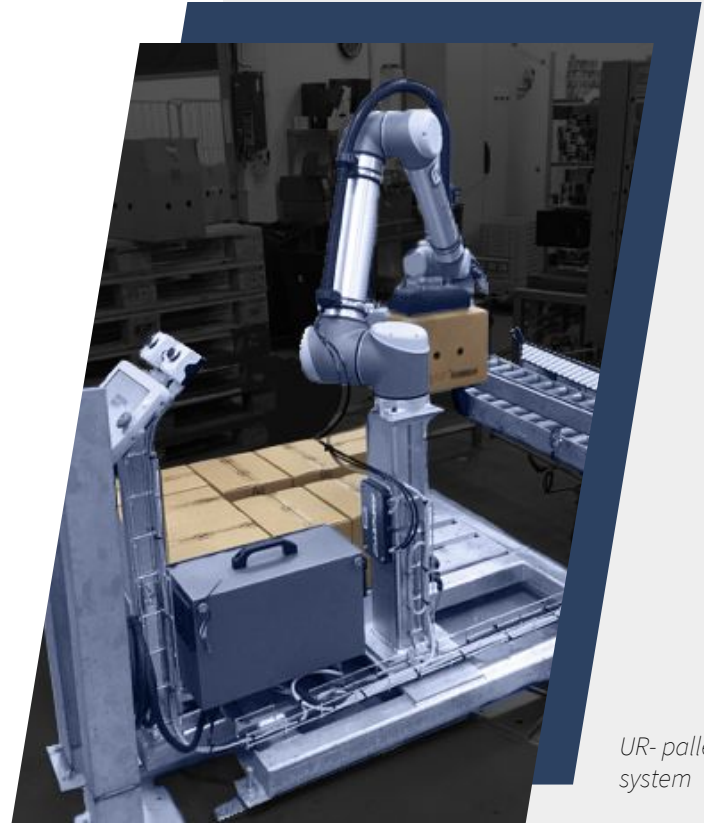
USING PALLETIZER SOFTWARE:







Teach patterns in the pattern generator and load them to the robot via magic files




UR- palletizing system



VIDEO

1st generation:



1,3m range and six degrees of freedom



PLAN AND PRICING

PRICE MODEL

UR10 Hardware - EUR 30 000

Sales service - EUR 10 000

Installation - EUR 10 000

RF Software - EUR 10 000

Total Budget - EUR 60 000

PROMOTIONAL OFFER:

Low cost (EUR 10 000, 50% off from 5 licenses if 20 are sold)

RF supplies the software to the integrator, which leaves a budget of EUR 20 000 for the integrator.

RF joins the first installation(s) with the user free of charge



EMIL NISSFOLK

Kameleon Gruppen

"Together with Rocket Farm we have now delivered several palletizing cells using UR10 to the industry. The software developed by RF is excellent both in terms of user friendliness, stability and operation."



www.kameleongruppen.no



REFERENCE



CONTACT US



Egil Mundal
CEO- Rocketfarm

E-mail: egil@rocketfarm.no
Mob.: +47 952 73 630



Lars Bårdgard Åstveit
Head of Automation

E-mail: lars@rocketfarm.no
Mob.: +47 984 18 301



Beatriz L. Rodriguez
Sales representative UK

E-mail: beatriz@rocketfarm.no
Mob.: +44 7592 524786